



Eagle Newsletter

October 3, 2022

Encourage, Empower, Excel

IMPORTANT

dates to remember



- Picture Day- October 4th
- SBDM Meeting – October 6th
- Professional Development (No School) – October 7th
- Fall Break – October 10th-14th
- Gushy Guts – October 20th
- Red Ribbon Week – October 24th – 28th
- Parent Teacher Conferences – October 25th & 27th 3:00 p.m. – 6:00 p.m.
- Mystery Reader Day- October 31st



- Professional Development (No School) – November 7th
- Election Day (No School)- November 8th
- Picture Retakes – November 9th
- SBDM Meeting – November 10th @ 2:45 p.m. in Library
- Thanksgiving Break -November 23rd-25th



SCHOOL MENUS FOR October 3rd-6th

*No School Friday.

ALL MEALS ARE FREE TO STUDENTS!

Week 3	Monday Cinnamon Bun Juice Peaches Milk	Tuesday French Toast Sticks Juice Applesauce Milk	Wednesday Breakfast Pizza Juice Apple Slices Milk	Thursday Cereal Bowl Juice Raisins Milk	Friday Chicken Biscuit Juice Orange Wedges Milk
Week 3	Monday Calzone Green Beans (3/4 Cup) Pears Milk	Tuesday BBQ Sandwich French Fries (1/2 cup) Baked Beans (1/2 cup) Peaches Milk	Wednesday Sausage/egg/Biscuit Potato Smiles (4) Broccoli w/ Cheese Baked Apples Milk	Thursday Chicken Patty on Bun Cooked Carrots (3/4 Cup) Applesauce Milk	Friday Ham & Cheese Sliders (2) Fresh Veggies (3/4 cup) Baked Chips Fruit Cup Milk

Oct. 3rd-6th

***Students who participate in afterschool programs must turn in a note with permission to stay after school and any transportation changes.



After School Clubs

Schedule

Monday		
Tuesday ☆	2:30 p.m. - 4:00 p.m.	5th Grade STLP
Wednesday 😊	2:30 p.m. - 4:00 p.m. 2:30 p.m. - 3:30 p.m.	Girls Who Code Choir
Thursday ♡	2:30 p.m. - 3:30 p.m.	3rd & 4th Grade STLP
Friday		

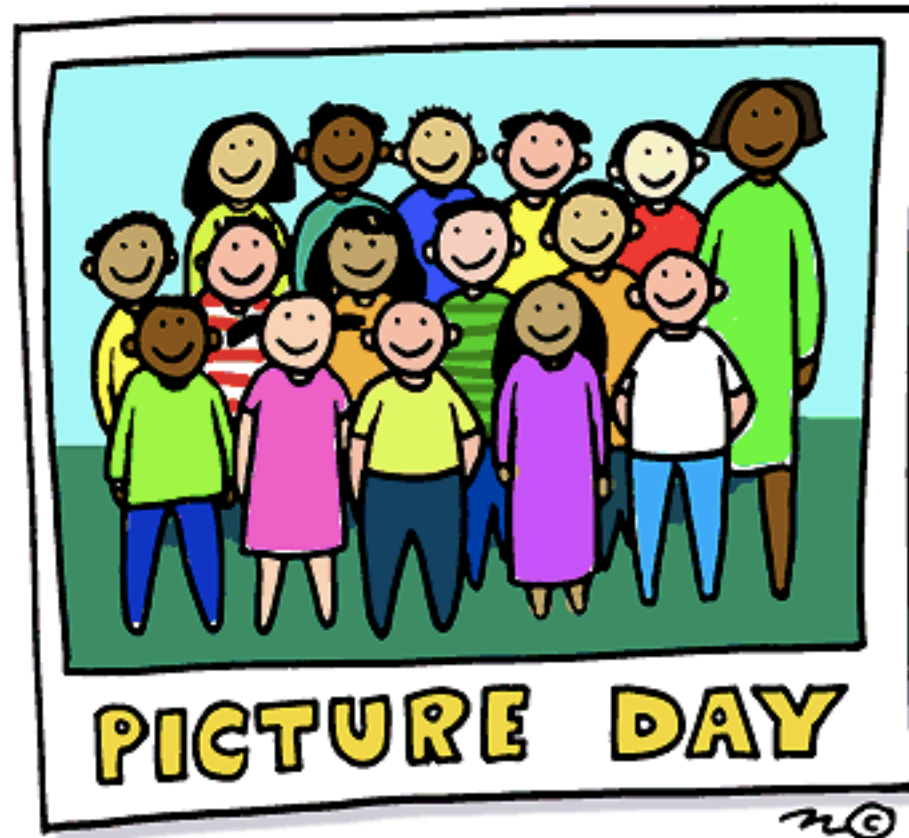




**Students and staff are
encouraged to wear their
crew color every
Monday!**



Student water bottles must only have water in them. Please do not send in soda, Gatorade, or other liquids in the water bottles. Drinks that are sent in for lunch inside of lunchboxes are still allowed, but water must be the only liquid in water bottles that stay out in the classroom.



is October 4th!



**No School October 7th and 10th-14th
for Professional Development Day
and Fall Break!**



There is no excuse for a dreary fall break when you can build your own fun brick by brick.

Think of this as Shelbyville's own version of LEGO Masters! This hands-on min-camp will explore novel building techniques, creative competitions, and epic MOCs (my own creations). Lead by Dr. Michael Troy Shell – professor of philosophy at JCTC and proud AFOL (Adult Fan of LEGO). Dr. Shell will not only give students the opportunity for creative fun but also push them to think critically about the self and world we BUILD every day! We will work on designs for the Habitat creations for Manufacturing Day Competitions.

Monday and Tuesday Oct 10 and 11, 9-Noon (during Shelby County Fall Break)

(Students 3-5th Grades), limit 20 students

[Click here to sign up!](#)



LOUCITY & RACING
FOUNDATION

SOCCER CLINIC

**12 & 13
OCTOBER**

TIME
1:30-2:30PM

GRADES
K-12

LOCATION

MARNEL C. MOORMAN SOCCER FIELDS

501 DISCOVERY BLVD. SHELBYVILLE, KY 40065



LOUCITY & RACING FOUNDATION IS
OFFERING A FREE SOCCER CLINIC FOR
K-12 STUDENTS IN SHELBY COUNTY.
COME LEARN FROM THE PROS!

STUDENTS DO NOT NEED TO WEAR
CLEATS OR SHIN GUARDS, BUT WILL
NEED TO DRESS COMFORTABLY AND
BRING A WATER BOTTLE.

Use the Google form below or contact your
FRYSC to sign up!

Melanie Madison, 502-829-5242

[HTTPS://DOCS.GOOGLE.COM/FORMS/D/E/1FAIPQLSFUK43LRJ-VAZ_8OHMR5MJV4_ORUOM7IIC_PR3ECFPRCCNEDQ/VIEWFORM](https://docs.google.com/forms/d/e/1FAIPQLSFUK43LRJ-VAZ_8OHMR5MJV4_ORUOM7IIC_PR3ECFPRCCNEDQ/viewform)

If you need assistance with transportation, contact your FRC

[Click here to sign up!](#)



Heritage Elementary
invites families to

Gushy Guts!

WHEN: THURSDAY, OCTOBER 20th

5:30 p.m. - 7:00 p.m.

WHERE: HERITAGE ELEMENTARY

DON'T FORGET TO BRING:

- **A PUMPKIN** (bring as many gourds as you may need for each participating family member)
- **SOME TOOLS** (because carving a pumpkin with your finger is really difficult)
- **YOUR FAMILY FOR SOME WHOLESOME JACK-O-LANTERN CARVING, and**

LITERACY FUN!!!

This event is sponsored by Title1 and the FRC and the GEER Grant.





Red Ribbon Week 2022

October 24th-31st



Heritage will celebrate being DRUG FREE with dress up days! Students may wear themed items each day to promote being drug free!

Students may turn in a poster on the theme “Celebrate Life, Live Drug Free” to Mrs. Madison by Wednesday, October 26th, for a prize!

Monday, October 24th- Proud to be drug free!- Wear Your Crew Color!!

Tuesday, October 25th- Drug free from head to toe!- Wear Your Favorite Hat and Crazy Socks!



Wednesday, October 26th- Brave to be me, drug free!-Wear Camo!



Thursday, October 27th - Stay in the game, be drug free! - Wear Your Favorite Sports TEAM COLORS/ATTIRE!



Friday, October 28th - We have school spirit, drug free!- Wear Your Favorite Heritage Attire!



Monday, October 31st - Wake up drug free!- Wear Your Favorite Pajamas!





Heritage's Red Ribbon Week Food Drive for the Shelby County Backpack Program! October 24th-31st



The Shelby County Backpack Program provides specific non-perishable food items for students over the weekends at every school in Shelby County. Heritage would like to support this important program by having a food drive during Red Ribbon Week to spread kindness!

Students and staff may bring in the following items:

- (Poptop) Vienna Sausage cans
- (Poptop)Soups/Chef Boyardee
- Pop-Tarts
- Cereal Bars

****All soup or Chef Boyardee cans must be pop top, as some students may not have can openers. The backpack program can only take pop tarts and cereal bars that are nut free due to food allergies.



**JOIN
THE
HERITAGE
BABY EAGLES'
CLUB**



**YOU CAN SIGN UP FOR A MONTHLY FREE
BOOK AND RESOURCES WHEN YOU SEND IN
A PICTURE OF YOUR LITTLE ONE WHO IS 4
YEARS OLD AND UNDER. YOU CAN EMAIL
THE PICTURE WITH THE CHILD'S NAME AND
AGE TO
MELANIE.MADISON@SHELBY.KYSCHOOLS.US**



School Payments Simplified

MY
SCHOOL
BUCKS

Easily pay for school items and fees with MySchoolBucks



Fast & Easy
Checkout



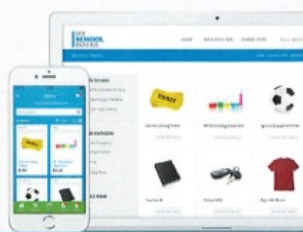
Simple
& Secure



Make Payments
Anytime

Get Started:

- 1 Go to myschoolbucks.com or download the app
- 2 Visit the school store & add items to your cart
- 3 Check out with your credit/debit card



MySchoolBucks.com

DOWNLOAD



GET SOCIAL



Compras Escolares Hechas Fáciles

MY
SCHOOL
BUCKS

Fácilmente pague las tarifas y los artículos escolares con MySchoolBucks.



Pagos rápidos
y fáciles



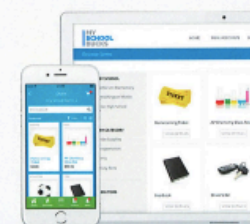
Sencillo
y Seguro



Pague en
cualquier momento

Para Comenzar:

- 1 Vaya a myschoolbucks.com o descargue la aplicación
- 2 Visite la tienda escolar y agregue los artículos al carro
- 3 Pague con su tarjeta de crédito o débito



MySchoolBucks.com

DESCARGUE



SOCIALIZA





Johnna M. Black,
Principal

Megan Baxter
School Counselor

Encourage, Empower, Excel

Heritage Elementary
8300 Frankfort Road
Waddy, KY 40076
Ph: (502) 829-5242
Fax: (502) 829-9605

Molly Smith,
Assistant Principal

Kara Clark,
Instructional Coach

Dear Heritage Families:

We are announcing the fee structure for the 2022-23 school year for all our elementary grades.

- **No device usage fee** will be charged, however, damaged or lost items will still require a payment.
- **A simpler, less expensive supply list** has been developed for use by all elementary grades, district-wide.
- All elementary schools will charge the same **\$20 instructional fee** and no other fees will be charged for instructional supplies; this \$20 will cover items such as headphones, erasers, Primary journals, additional or specialized folders and notebooks, rulers, index cards, highlighters, agenda books, field day t-shirts, recorders, etc.
- Any elementary student participating in at least one school club will be charged **only one \$20 club fee** instead of multiple individual club fees.
- **No other fees** will be charged during the 2022-23 school year for elementary grades except for occasional field trips; the maximum fee an elementary parent will pay is \$40 (plus field trips)
- **No other requests** will be made for elementary parents to send in classroom supplies for the 2022-23 school year

A waiver or adjustment may be made for any student qualifying for free or reduced meals to ensure that no student is denied services due to the inability to pay. In order for your student to receive the fee waiver, you are required to complete the Educational Benefit Form (EBF).

If you would like to donate additional funds or supplies, you can do so by contacting the school office or the Family Resource Center.

Thank you for allowing us to serve your children!

School Calendar

Shelby County Public School 2022-2023

July 2022						
Su	Mo	Tu	We	Th	Fr	Sa
					1	2
3	4	5	6	7	8	9
10	11	12	13	14	15	16
17	18	19	20	21	22	23
24	25	26	27	28	29	30
31						

August 2022						
Su	Mo	Tu	We	Th	Fr	Sa
	1	2	3	ELE SEC		6
7	SB	9	10	11	12	13
14	15	16	17	18	19	20
21	22	23	24	25	26	27
28	29	30	31			

September 2022						
Su	Mo	Tu	We	Th	Fr	Sa
					1	2
3	4	5	6	7	8	9
10	11	12	13	14	15	16
17	18	19	20	21	22	PL
23	24	25	26	27	28	29
30						

October 2022						
Su	Mo	Tu	We	Th	Fr	Sa
						1
2	3	4	5	6	SB	8
9	10	11	12	13	14	15
16	17	18	19	20	21	22
23	24	25	26	27	28	29
30	31					

November 2022						
Su	Mo	Tu	We	Th	Fr	Sa
		1	2	3	4	5
6	DPLC	8	9	10	11	12
13	14	15	16	17	18	19
20	21	22	23	24	25	26
27	28	29	30			

December 2022						
Su	Mo	Tu	We	Th	Fr	Sa
					1	2
3	4	5	6	7	8	9
10	11	12	13	14	15	16
17	18	19	20	21	22	23
24	25	26	27	28	29	30
31						

January 2023						
Su	Mo	Tu	We	Th	Fr	Sa
1	2	3	4	5	6	7
8	9	10	11	12	13	14
15	16	17	18	19	20	21
22	23	24	25	26	27	28
29	30	31				

February 2023						
Su	Mo	Tu	We	Th	Fr	Sa
			1	2	PL	4
5	6	7	8	9	10	11
12	13	14	15	16	DPLC	18
19	20	21	22	23	24	25
26	27	28				

March 2023						
Su	Mo	Tu	We	Th	Fr	Sa
			1	2	3	4
5	6	7	8	9	10	11
12	13	14	15	16	PL	18
19	20	21	22	23	24	25
26	27					

April 2023						
Su	Mo	Tu	We	Th	Fr	Sa
						1
2	3	4	5	6	7	8
9	10	11	12	13	14	15
16	17	18	19	20	21	22
23	24	25	26	27	PL	29
30						

May 2023						
Su	Mo	Tu	We	Th	Fr	Sa
	1	2	3	4	5	6
7	8	9	10	11	12	13
14	15	16	17	18	19	20
21	22	23	24	25	26	27
28	29	30	31			

June 2023						
Su	Mo	Tu	We	Th	Fr	Sa
					1	2
3	4	5	6	7	8	9
10	11	12	13	14	15	16
17	18	19	20	21	22	23
24	25	26	27	28	29	30

Professional Development (No School for Students)	Election Day (No School)	Break (No School)	Personalized Learning Day
First and Last Day of School	Opening and Closing Day For Staff	Holiday (No School)	

<p>Mrs. Samantha Roberts</p> <p>Teaching Position:</p> <p>English Learner Teacher</p> <p>EL Teacher</p> <p>Contact Information:</p> <p>Phone: (502) 829-5242</p>	<h1>MEET THE TEACHER!</h1> <p>Personal Information: I have lived in Shelby County my entire life, AND I have taught in Shelby County my entire teaching career of 27 years.</p>	
<p>Education/Degrees:</p> <p>Bachelors: Kentucky State University</p> <p>K-6 Grade Self-Contained</p> <p>Masters: Georgetown College</p> <p>(Elementary Education)</p> <p>Rank 1: University of Louisville with English as a Second Language Endorsement</p>		<p>Hobbies/Interest:</p> <p>Writing, Journaling, Poetry</p> <p>Lover of Music (Not Just Rock Music)</p> <p>Nature Walks</p> <p><u>Smokey</u> Mountains</p> <p>History Reenactor</p> <p>Spending Time with my Family (my husband and 2 sons)</p>

Staff Birthdays:

Jill Renfro 10/24

Martha Fuqua 10/30

Pursuant to KRS 158.186, before Sept. 15 of each year the commissioner of education must distribute copies of [KRS 158.183](#), which details the “rights of students,” and [KRS 158.195](#), which requires each public elementary and secondary school to “display the national motto” of the United States.

[**Click here to read the Student Handbook for this year!**](#)

[**Click here to read last Friday’s district newsletter.**](#)

COMMUNITY EVENTS



Resources, & Information



STRAIGHT TALK

**“WEED BETWEEN THE LINES”
“VAPING ME CRAZY”
“ONE PILL CAN KILL”.**

The epidemic of teen vaping and the rate of fatal teen overdoses is on an upward trend. The Straight Talk presentation teaches parents, guardians, educators, pastors, and other adults about the current drug trends, signs, and symptoms. The program offers discussion points to help prevent teens from initial use.

Presenter Michael DeLeon (author, film maker, social worker, drug specialist, and former gang member) is the founder of the Steered Straight organization. Join us for a free catered dinner and straight talk about our teens!

RSVP TO:

Christina.olsson@shelby.kyschools.us
or call 502-633-2344 ext. 3212 by Sept. 29th

STRAIGHT TALK FOR ADULTS

**MONDAY, OCTOBER
3RD, 2022
5:30 – 7:00pm**

**AT THE BLAIR CENTER
on the SOUTHSIDE
ELEMENTARY CAMPUS,
GINGKO DRIVE**

**A FREE CATERED
DINNER IS
PROVIDED**

**SPONSORED BY THE SCPS
FAMILY RESOURCE AND
YOUTH SERVICES
CENTERS**

Catered by Linda Aldridge with
All the Way Shoppe Catering





SHELBYVILLE
SHELBY COUNTY
PARKS & RECREATION



TRICK OR TREAT STREET
and
TRAIL OR TREAT
Saturday, October 22nd



5-6:30PM

Clear Creek Park
717 Burks Branch Rd.
Shelbyville, KY 40065

FREE FOR ALL!

REGION 5

FRYSC Coalition

Ways to help Eastern Kentucky

The Family Resource and Youth Services Coalition of Kentucky (FRYSKY) encourages you to support the EKY flood relief and recovery effort either through donation of supplies (see list below) or by making monetary donations to one of the following funds. You can also follow the Coalition's Facebook page where local FRYSC requests will be shared as we see them.

MONETARY DONATIONS

KEA Appalachia Fund has set up a GoFundMe account that will go directly to Family Resource/Youth Service Center Directors in each eastern Kentucky school district affected by the floods. To donate you can click here: <https://loom.ly/odrGURg>

FRYSC Strong for Kentucky - every donated dollar goes to local FRYSC coordinators to help the families impacted by the flood. FRYSKY has an application process in place which was developed following the WKY tornadoes last year.

Online Donations (Venmo): FRYSC Strong for Kentucky @support-KY-FRYSC

Team Kentucky has established the Team Eastern Kentucky Flood Relief Fund to assist those impacted by the floods. To donate you can click here: <https://loom.ly/4YuT2KY>

<https://secure.kentucky.gov/FormServices/Finance/EKYFloodRelief>

Household Hazardous Waste Collection Event

Sponsored by the City of Shelbyville, Shelby County and Kentucky
Division of Waste Management

Saturday, October 8th, 2022

9:00 AM—2:00 PM

Rain or Shine

120 Midland Boulevard

**(Planet Fitness Parking Lot adjacent
to Hardees)**

Free to all Shelby County Residents

Items Accepted

Workshop and Painting Supplies:

• Adhesives & glues • Furniture Strippers • Oil or enamel paint • Paint thinners & removers • Turpentine • Photographic chemicals • Stains & finishes

Outdoor Pesticides • Ant & cockroach sprays and baits • Bug Sprays • Flea repellents and shampoos • Insecticides • Moth repellents • Mouse & rat poisons/baits

Automotive Products • Refrigerants & anti-freeze • Automotive batteries • Carburettor & fuel injection cleaners • Fuel & fuel additives • Propane Tanks • Transmission, brake & starter fluids

Cleaning Products • Bleach • Drain Cleaners • Oven Cleaners • Toilet cleaners • Tub, tile & shower cleaners • Wood & metal cleaners and polishes

Lawn & Garden Products • Fungicides • Wood preservatives • Herbicides • Insecticides • Pesticides

Miscellaneous • Batteries • Driveway sealer • Fluorescent light bulbs • Kerosene

WHAT IS HOUSEHOLD HAZARDOUS WASTE?

It is estimated that Americans have an average of 3-10 gallons of Household Hazardous Waste in their homes. Household Hazardous Waste is any household product which is labelled:

Caution	Danger
Flammable	Explosive
Toxic	Warning
Corrosive	Poison
Volatile	

or a combination of these characteristics. Look for warning or skull and crossbones on label. They are hazardous because when released, spilled, or incorrectly used they have the potential to harm you, your pets or the environment. The unused or unwanted materials are known as Household Hazardous Waste or HHW.

Items NOT Accepted:

- Used Motor Oil –accepted at several locations throughout Shelbyville.
- Explosives or Ammunition
- Radioactive Waste
- Infectious or Medical Waste
- Water Based Sealants
- Household trash
- Prescription Medication
- E-Waste (TV's, computers, printers, cellphones, vcr/dvd/cd players and other electronic items)
- **No Business items**

For More information, contact

Jennifer Herrell, City Engineer
City of Shelbyville
Public Works Department
502-633-1094
www.shelbyvillekentucky.com

Randy Long
Shelby Clean Community Program
502-633-4774
www.shelbycountykentucky.com





Ready to Jump Start your Future?

We can help you get a good job and career.

Kentucky Career Center services and KentuckianaWorks offer assistance at any point in your career path. Our services include:

- Customized career advice for today's job market
- Help optimizing your resume & finding jobs. Start at focuscareer.ky.gov
- Assistance sharpening your interview skills
- Help building your professional network
- Up-to-date, local career information at www.careercalculator.org
- More than 4,000 online training courses
- Access to job leads and job fairs
- Specialized services for qualifying veterans
- Resources for visually impaired or disabled job seekers

kentuckianaworks.org

KentuckianaWorks is the Greater Louisville Workforce Development Board that serves Jefferson, Bullitt, Henry, Oldham, Shelby, Spencer and Trimble counties, and is an operator of the Kentucky Career Center, through contract with ReaCare Workforce Services, in partnership with the Office of Employment and Training and other agencies. Funding is provided by the U.S. Department of Labor, through the Ky. Education and Workforce Development Cabinet, and administered by KentuckianaWorks - an agency of Louisville Metro Government, Equal Service, Education and Employment Opportunities M/F/D/V.

**Kentucky
Career Center**
KentuckianaWorks



AmericanJobCenter



Hosparus Health Grief Counseling Center

Upcoming Youth and Family Programs

Guardians of Grief Treasure Hunt

Thursday, September 29, 1:00 – 3:00 p.m.

Find clues to learn and care for grief and solve the puzzle of a missing map that leads to a hidden cache of unexpected treasure. Children, ages 6-11. Space is limited. RSVP is required.

Camp Evergreen

Friday evening, October 14 – Sunday, October 16

This weekend retreat is for families with children ages 6-18 healing from loss due to death. Registration deadline is Monday, September 19th. Access your application at: <https://bit.ly/campevergreen2022> or find us online at Hosparus.org

Setting the Table for Gratitude

Saturday, November 12, 10:30 a.m. – 2:00 p.m.

Family-centered workshop for ages 5 and up and the adult(s) to whom they are connected. Learn about gratitude's relationship to grief and create "Gratitudes" and other things for your Thanksgiving table. Lunch provided. Registration required.

Unexpected Gifts: Ornaments and Other Connecting Objects

Saturday, December 10, 10:30 a.m. – 1:30 p.m.

Family-centered workshop for ages 5 and up and the adult(s) to whom they are connected. The season of gift giving invites us to consider what we have received from those close to us. Create ornaments and simple gifts to pay this forward. Lunch provided. Registration required.

First Cup of the Day: Parent Talk (Virtual)

Every 1st and 3rd Wednesday mornings, 9:30 – 10:30 a.m.

On its best days parenting is challenging. It is even more so when parenting a grieving child while adapting to loss, yourself. Here we talk about everything from behaviors to expect, how to address them, and handling questions that have no easy answers. Pour yourself a cup and join in this ongoing conversation. Registration is required. You will be sent a link to the conversation just prior to its scheduled times. Questions? Contact Erin at 502-456-5451.

Registration is easy. Look for program links on our website:

www.Hosparushealth.org or call the Grief Counseling Center at 502-456-5451.

G-FORCE

A support program for grieving youth

Gravity. It grounds us. It holds us in orbit. It helps us stay centered. It pulls against us when rocketing into the stratosphere. Grief works much the same way. G-Force refers to the pull of gravity when making a transition forward. It takes practice and conditioning to withstand the pressure and to adapt. So does grief. We are not helpless in the face of loss. We can become stronger, more resilient, and confident that we can do hard things.

G-FORCE is a peer-centered education, support, and networking opportunity for youth coping with loss due to death. Meetings occur throughout the year offering a cycle every fall and spring following the school calendar. Youth can join at any point and re-up in an upcoming cycle.

**G-FORCE meets at the Hosparus Health Grief Counseling Center
3526 Ephraim McDowell Drive, Louisville, 40205**

For youth in grades 6 through 10

Fall 2022: Every 1st and 3rd Thursday, 4:30 – 6 p.m.
September 1 through December 15

Spring 2023: Every 2nd and 4th Thursday, 4:30 – 6 p.m.
February 9 – April 27

For youth in grades 2 through 5

Fall 2022: Every 1st and 3rd Friday, 4:30 – 6 p.m.
September 2 through December 16

Spring 2023: Every 2nd and 4th Friday, 4:30 – 6 p.m.
February 10 – April 28

There is no cost for this program, but registration is required.
Registration can be completed online at www.hosparushealth.org
Or by calling the Grief Counseling Center at 502-456-5451

Grief is a force of nature. So are you.



HOSPARUS HEALTH®

Evergreen

A CAMP FOR FAMILIES COPING WITH DEATH



Evergreen is made possible through the generous support of the WHAS Crusade for Children and Kosair Charities, as well as other corporations, groups and individuals. Registration fees cover only a portion of the expense of this program.

Join us for a special weekend where traditional camp meets important grief work for bereaved families with children (ages 6 - 18).

Evergreen is facilitated by licensed professional counselors from the Hosparus Health Grief Counseling Center and trained volunteers. This unique retreat provides an opportunity for families to gather, enhance their resilience and rediscover hope.

*All meals and snacks are provided.
Each family enjoys a private room.*

October 14-16, 2022
(Friday Evening-Sunday Afternoon)

Registration fees are as follows:

Family of 2 - \$100
Family of 3 - \$125
Family of 4 - \$150
(additional family members \$25 each)

Scholarship assistance is available for families based on need.

**Application deadline is Monday,
September 19, 2022.**

Register online:
<https://bit.ly/campevergreen2022>
Applications are available by phone,
502-456-5451.

Space is limited so be sure to register early.

Camp Evergreen is held at:
Country Lake Christian Retreat
815 Country Lake Rd,
Underwood IN 47177
(30-minute drive north of Louisville)

ACTIVITIES

- Family time and recreation
- Team building and cooperative games
- Specialized grief workshops
- Traditional campfire
- Art activities and games
- Memorial celebration

Hosparus Health Grief Counseling Centers provide grief support through counseling, educational classes, and groups for children and adults.

Make a change ...



... to make more than change!

Did you know that GED® graduates earn an average of \$9,400 more per year than non-graduates?

Those who go on to earn an associate degree earn an average of \$6,900 more per year than that – and it only goes up from there!

We can help you learn more to earn more!

We offer FREE academic skill-building classes that can help you:

- Earn GED® diploma • Prepare for college
- Increase career opportunities • Increase employability skills
- Assist kids with homework • And much more!

JCTC Shelby County Adult Education

1361 Frankfort Road, Shelbyville, KY 40065

502-213-3669

http://jefferson.kctcs.edu/Academics/Adult_Education

**KENTUCKY
Adult Education**

Your future starts here!

1-800-928-7323 • www.facebook.com/KYAdultEducation

Would you like to learn English?

Shelby County Adult Education offers FREE ESL Classes

Learn:

- To speak English
- To read and write
- Daily life skills
- Basic communication skills
- Advanced English



JCTC Shelby County Adult Education

St. James Episcopal Church

222 Main Street

Shelbyville, KY 40065

Registration is week of August 7

Mon. & Wed. 9:00 a.m. – 11:00 a.m. Tues. & Thurs. 6:00 p.m. – 8:00 p.m.

Register Now!

Times of class are the same as above.

Shelby County Daycares List

Call for openings.

Childcare Facilities /Cuidado de Niños

- **Adventure Club- infants and toddlers through 5th grade**
<https://simpsonvillebaptist.com/connect/weekday-preschool-2/>
Phone (502) 722-5249 or Email: ac@simpsonvillebaptist.com
- **Inspirations Child Care**
7387 Shelbyville Rd, Simpsonville, KY 40067 Phone: (502) 205-0026
- Corpus Christi Classical Academy Montessori Program
7010 Us Highway 60, Simpsonville KY 40067
Simpsonville, KY 40067 | (502) 722-8090
- **Kidsplay Child Care**
54 Old 7 Mile Pike, Shelbyville, KY 40065 (502) 633-9663

- **Shelbyville Community Day Care**
520 Mount Eden Rd, Shelbyville, KY 40065 (502) 633-6757
- **Little Hands Development Center**
250 haven Hill Rd,, Shelbyville, KY 40065 (502) 437-0547
- **Child Town Inc**
1940 Midland Trl, Shelbyville, KY 40065 (502) 633-2050
- **Little Stars Preschool**
100 Loop Rd, Fisherville, KY 40023 (502) 477-1150
- **Dorman Preschool Center**
719 Burks Branch Road, Shelbyville, KY - 40065 (502) 633-2760

Online Search Tool

<https://www.4cforkids.org/for-families/find-child-care/>

Child Care Referrals Tailored to Your Needs

Selecting child care that meets your needs isn't always easy. Let us help you identify providers in your area that offer the kind of care you need. We offer a variety of ways to search for state-regulated child care in Louisville and the surrounding area. We can search for child care based on the ages of your children, your work and home schedules, your commute route, whether you need transportation for your child, and other factors that make your needs unique. We do not license, endorse, or recommend any particular provider. Only you can determine the best quality care setting for your child.

- ONLINE SEARCH – This tool allows you to create your own customized search for state-regulated child care in Kentucky. This search includes information about ages served, operating hours and STAR ratings. You will be prompted to create log in information.
- **CALL** – To speak to a referral counselor, call 502-636-1358.

Herramienta de búsqueda en línea

Referencias de cuidado infantil adaptadas a sus necesidades

<https://www.4cforkids.org/for-families/find-child-care/>

No siempre es fácil seleccionar un cuidado infantil que satisfaga sus necesidades. Permítanos ayudarlo a identificar proveedores en su área que ofrezcan el tipo de atención que necesita. Ofrecemos una variedad de formas de buscar cuidado infantil regulado por el estado en Louisville y sus alrededores. Podemos buscar cuidado infantil en función de las edades de sus hijos, sus horarios de trabajo y hogar, su ruta de viaje, si necesita transporte para su hijo y otros factores que hacen que sus necesidades sean únicas. No autorizamos, respaldamos ni recomendamos a ningún proveedor en particular. Solo usted puede determinar el entorno de atención de mejor calidad para su hijo.

- **BÚSQUEDA EN LÍNEA:** esta herramienta le permite crear su propia búsqueda personalizada de cuidado infantil regulado por el estado en Kentucky. Esta búsqueda incluye información sobre edades atendidas, horas de funcionamiento y calificaciones de STAR. Se le pedirá que cree información de inicio de sesión.

LLAME - Para hablar con un consejero de referencias, llame al 502-636-1358.



The Serenity Center has a food bank on Wednesdays
from 12 p.m. to 4 p.m.

Serenity Center
98 7th Street
Shelbyville, KY 40065

The Bagdad Baptist Food Pantry is open the 2nd and 4th Saturday
of every month from 9:15 a.m. – 12:00 p.m. Food is available to
any Shelby County residents. Must show a valid driver's license.
Entry is in the back of the church. There is also a small pantry
outside the church open at all times.



Heritage Elementary Family Resource Center

Melanie Madison, Coordinator

Phone number: (502) 829-5242

Hours of Operation: Monday-Friday 7:00 a.m. - 3:00 p.m., available evenings and weekends by appointment.





Check out the Virtual FRC Office!

<https://docs.google.com/presentation/d/106NkKh0pa6b5qnn0m93ZDNJgXuYtIDDUEHAYDeRWokc/edit#slide=id.>